



GOLD TOWER
KOCHI
THE GOLD STANDARD

Joyalukkas Lifestyle Developers, Joyalukkas India Pvt. Ltd., Marine Drive, Cochin. 682 031, Tel:0484-2385035,
email: sales@joyalukkasdevelopers.com, www.joyalukkasdevelopers.com

UAE: +971 56 1183847, +971 56 1183848, +971 56 1183849 | **OMAN:** +968 99452526, +968 99452545 | **KUWAIT:** +965 98002314, +965 98002315
BAHRAIN: +973 38896684, +973 38896685 | **SAUDI ARABIA:** +966 500021581, +966 500026581 | **QATAR:** +974 33150848, +974-33151724
SINGAPORE: : +65 97730917 | **MALAYSIA:** +60 167254725 | **UK:** +44 7917002848



LOCATION
AND LUXURY
CAN'T GET ANY
BETTER THAN THIS



GOLD TOWER
KOCHI
THE GOLD STANDARD



Joyalukkas

Lifestyle developers

Excellence is subjective. And the benchmark for excellence is reset every now and then. The real estate landscape in Kerala will soon witness such a profound change in the definition of excellence.

Welcome to the universe of Joyalukkas Lifestyle Developers, belonging to the illustrious Joyalukkas Group that has a glittering track record in gold and textile retail. Its global presence and sheer magnitude make Joyalukkas unarguably a multinational brand. With its international perspective and practices, Joyalukkas now brings to you a new world of joy.



Kochi

Kochi is a cosmopolitan, dynamic and fast-growing city with stars in its eyes. Kochi's glorious heritage, dating back to centuries, endows it with a unique pedigree. Its rapid metamorphosis as a hub of IT, Shipping and Commerce, gives Kochi a future full of promise. Enjoy the opportunities that Kochi offers from the golden heights of GOLD TOWER.



The gold standard in living

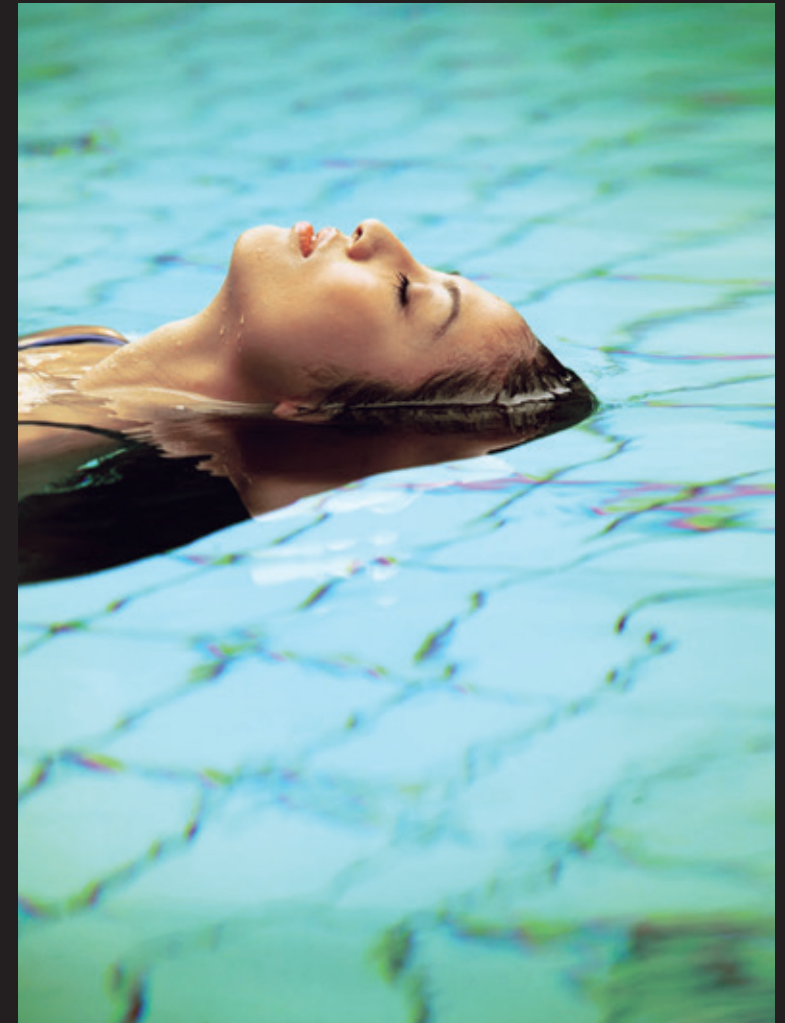
Joyalukkas Lifestyle Developers proudly presents Gold Tower, a soaring 22-storey skyscraper, with 24-carat luxury embedded in it. Everything about Gold Tower is truly world-class. The elevation, the amenities, the plans, the fixtures & fittings... everything at Gold Tower carries the stamp of universal excellence.

22 storeys + amenities floor + helipad designed by a team of internationally-reputed architects. Draws inspiration from the finest projects in the Far East and Middle East.

Take a plunge into luxury

Plunge in to the sparkling blue waters of the pool, swim away your woes, frolic in the company of your little ones. Enjoy every bit of the water world with gay abandon! Besides the sparkling pool, Gold Tower offers a splendid array of lifestyle facilities.

- Jogging track
- Landscaped gardens
- Coffee shop



All about elegance

Elegance is a state of being. It's subtle, invisible and discreet. It's a soft whisper of evolved taste. It defines class and character. Gold Tower offers a medley of superlative features to create an unequalled ambience of class and elegance.

- 3.3m floor-to-floor height
- Centralized air conditioning
- Toughened double-glazed windows



Turn into a masterchef

Gather together around this ultra stylish cuisine corner. In the new scheme of things, the kitchen is not just a place where one prepares tongue-tingling food. It's also a place for banter, chatter and guest entertainment.

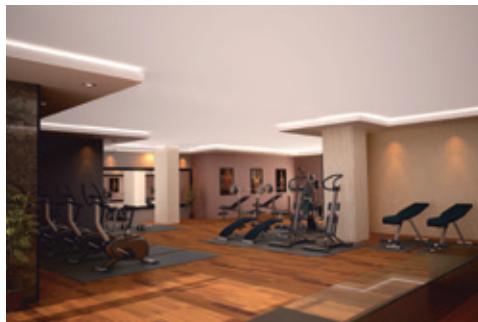
- European-made kitchen cabinet with built-in hood
- Centralized gas system



Health is wealth

Flex a muscle, stretch a leg, lift a weight... stay fit as a fiddle. A well-appointed health club with modern and premium equipment. Morning or evening, sweat it out in a chilled-out atmosphere.

- Health club with Jacuzzi and steam room



Reach the top

For the jetsetting league, here's the icing on the cake. A roof-top helipad with state-of-the-art landing facilities. So, when you want to fly in, just do it. Gold Tower is studded with a range of futuristic features.

- Provides the innovative FTTH (Fibre To The Home)
- Hi-Speed, 4 passenger elevators with capacity to carry 10 people each



The location map



Distance from Joyalukkas Gold Tower to Prime Locations

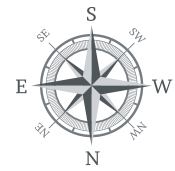
- Marine Drive - 7.1
- MG Road - 5.6
- Kaloor - 4.5
- Palarivattam - 2.3
- Palarivattam Bypass Junction - 1.6
- Airport - 26
- Aluva Bridge - 15
- Kalamassery - 8
- Nippon Toyota Showroom - 7.6
- KIMS Hospital - 5.5
- Lulu Mall - 4
- Oberon Mall - 2.6
- Padamugal Junction - 1.3
- Infopark - 4.6
- Smart City - 6.1
- Holiday Inn Hotel - 3.2
- Gold Souk Shopping Mall - 5
- Vytilla Junction - 5.6
- White Fort Hotel - 8
- Crowne Plaza Hotel - 9.3
- Le Meridian - 9.6

Master Plan

Typical Floor Plan
(1-22)



Floor Plan Type A



TYPE A
2372 SQFT

Floor Plan Type B



TYPE B
2178 SQFT

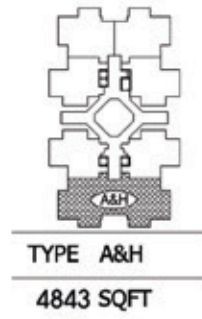
Floor Plan Type C



Floor Plan Type F



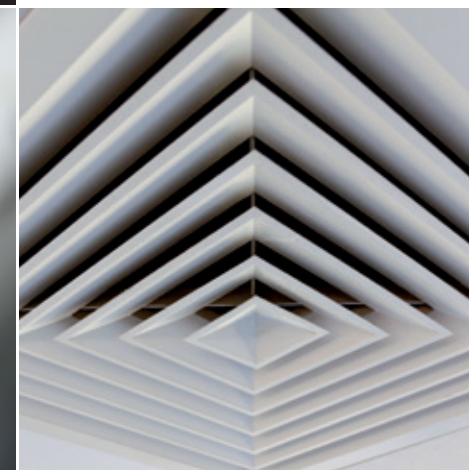
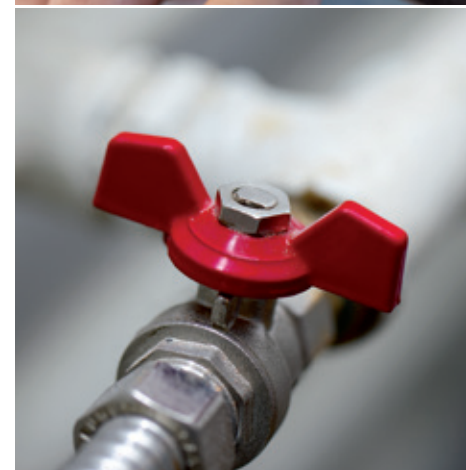
Combined Floor Plan
(Type A & H)



Silver category

SPECIFICATIONS

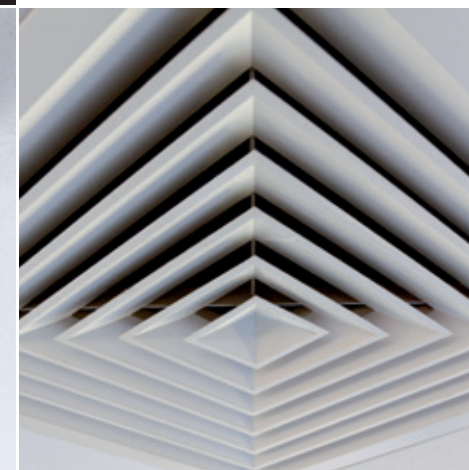
1. Natural veneer doors with European-made superior quality locks and fixtures
2. Double- glazed toughened glass windows
3. Premium quality vitrified tiles in the living and dining area
4. Premium quality AC4 laminated wooden flooring in bedrooms
5. Three-phase power supply
6. Adequate light and power points with premium European-made modular switches and sockets
7. Semi-vitrified/ceramic wall cladded designer toilets
8. Concealed plumbing system and provision for geyser
9. European-made CP fittings and sanitaryware
10. High-tech security system, provision for video door phone
11. CCTV cameras at all strategic locations
12. Advanced fire-fighting system as per government safety norms with automatic sprinkler system
13. Fire detection and fire alarm system
14. Centralised gas connection for all apartments
15. Premium quality plastic emulsion painted walls
16. FTTH facility
17. Generator back up for the essential points
18. SS hand rail with toughened glass in balconies
19. LED light fixtures
20. False ceiling with gypsum and metal grid



Gold category

SPECIFICATIONS

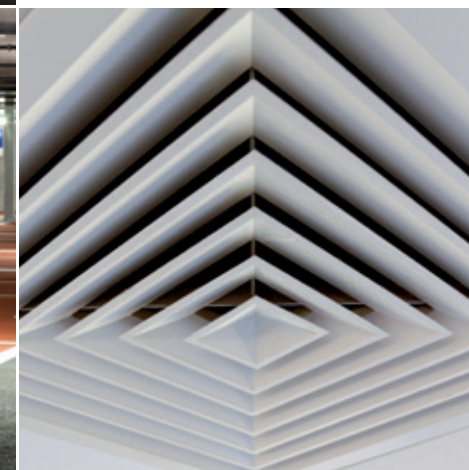
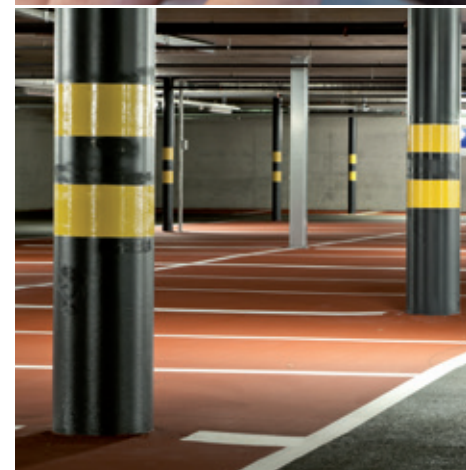
1. Natural veneer doors with European-made superior quality locks and fixtures
2. Double-glazed toughened glass windows
3. Premium quality glazed vitrified tiles in the living and dining area
4. Premium quality AC4 laminated wooden flooring in bedrooms
5. False ceiling with gypsum, wooden laminate and metal grids
6. Three-phase power supply
7. Adequate light and power points with premium European-made modular switches and sockets
8. Semi-vitrified/ceramic wall cladded designer toilets
9. Concealed plumbing system and provision for geyser
10. European-made CP fittings and sanitaryware
11. Japanese-made VRF air-conditioning system
12. High-tech security system, imported video door phone
13. CCTV cameras at all strategic locations
14. Advanced fire-fighting system as per government safety norms with automatic sprinkler system
15. Fire detection and fire alarm system
16. Centralized gas connection for all apartments
17. Premium quality plastic emulsion painted walls
18. FTTH facility
19. Generator back up for the essential points
20. SS hand rail with toughened glass in balconies
21. LED light fixtures



Platinum category

SPECIFICATIONS

1. One car park
2. Toughened glass shower partitions
3. Toilet wash counter, top & bottom units with mirror
4. Built-in wardrobes
5. Modular dining wash unit with storage and mirror
6. Modular kitchen
7. European-made kitchen appliances, hob & hood, dishwasher, microwave oven, grill, refrigerator, washing machine, dryer, stainless-steel double-bowl sink
8. LED light fixtures
9. Work area: modular work station with single-bowl, sink & drainboard



The Midas touch

The Joyalukkas Group is a multi-billion dollar global conglomerate with a commanding presence in over 10 countries. Founded in 1987, the group has come a long way under its charismatic Chairman Mr. Joy Alukkas.

Today, the group has over 10 million customers and straddles businesses as diverse as retail, aviation and finance. It employs over 7,000 people in the UK, USA, the UAE, Oman, Qatar, Bahrain, Kuwait, Saudi Arabia, India, Singapore and Malaysia.

The Joyalukkas Group's business interests include Jewellery, Fashion & Silks — Jolly Silks, Luxury Air Charter — Joy Jets, Money Exchange — Joyalukkas Exchange, Malls — Mall of Joy, Realty — Joyalukkas Lifestyle Developers — Electronics — Joyalukkas Digital.

Joyalukkas has been hailed as the world's favourite jeweller and has bagged the coveted "Superbrand" status, seven years in a row. The jewellery division of Joyalukkas has an impressive network of over 120 showrooms, spread across eleven countries. Joyalukkas Jewellery was the first jewellery retailer to receive the prestigious ISO 9001:2008 and 14001:2004 certifications.

The Group also devotes considerable attention and resources to its CSR initiatives. The Joyalukkas Group spearheads numerous CSR activities aimed at protecting the environment and promoting livelihood. The Group is a firm believer in the principle of sustainable development.

